

# DARLING DOWNS CYCLING CLUB

## AUSCYCLING QLD



## TRAVEL MEDICINE ALLIANCE

[www.travelmedicine.com.au](http://www.travelmedicine.com.au)

Round 1

ITT Series and Criterium.

# Saturday 24 May

Peter Watts Criterium Track

Harvey Rd

Toowoomba

## EVENT INFORMATION

ENTRIES VIA [EntryBoss](#)

ENTRIES CLOSE: Monday 19 May

NOTE: This information in this booklet is subject to change up until the commencement of each event. Details below are dependent on entries and consultation with AusCycling Qld and commissaires on the day. The advertised times are estimates and could be earlier or later.

**RACE SCHEDULE:** Check the [AusCycling Tech Regulations](#) to ensure compliance.

Event	Grade	Duration	Est Start Time
ITT	J17	See below	9:30am
ITT	J15		Following J17
ITT	Graded		Following J15
<b>11:30am ITT Presentations</b>			
<b>Criterion 1</b>	Under 15	20min + 2 Hot dog course	Assemble: 11:50am Start: 12:00pm Presentations: 12:40pm
<b>Criterion 2</b>	Combined Women C & Women D	30min + 2	Assemble: 12:20pm Start: 12:30pm Presentations: 1:35pm
<b>Criterion 3</b>	Combined Men Masters C & Men Masters D	35min + 2	Assemble: 12:20pm Start: 12:30pm Presentations: 1:35pm
<b>Criterion 4</b>	Combined Men C, Men Masters B, Women A & B.	40min + 2	Assemble: 1:15pm Start: 1:25pm Presentations: 2:35pm
<b>Criterion 5</b>	Men A, Men B and Masters A.	50min + 2	Assemble: 1:15pm Start: 1:25pm Presentations: 2:35pm
<b>Criterion Presentations held after each race.</b>			

#### CRITERIUM DETAILS:

- Under 17 to race according to their AusCycling grading.
- Criterion 2: Women C and D separate podiums, paying to 3<sup>rd</sup>.
- Criterion 3: Masters C and Masters D separate podiums paying to 3<sup>rd</sup>.
- Criterion 4: Men C, Masters B paying to 3<sup>rd</sup>. Women's A and B separate podiums.
- Criterion 5: Men's A/B and Masters A paying to 5<sup>th</sup> place.

## MEDALLIONS AWARDED FOR ITT.

PRIZE POOL of \$2000+ for Travel Medicine Alliance Criterion.

Road Bikes can be used for ITT.

OUR PARTNERS:

## Travel Medicine Alliance

[www.travelmedicine.com.au](http://www.travelmedicine.com.au)



**Safeguard your travel with expert travel medicine advice.**

**Ph: 1300 42 11 42**

**REFRESHMENTS:** [Sunrise Way](#) and Kickstart Caffeine on hand near the kiosk for food and coffee.



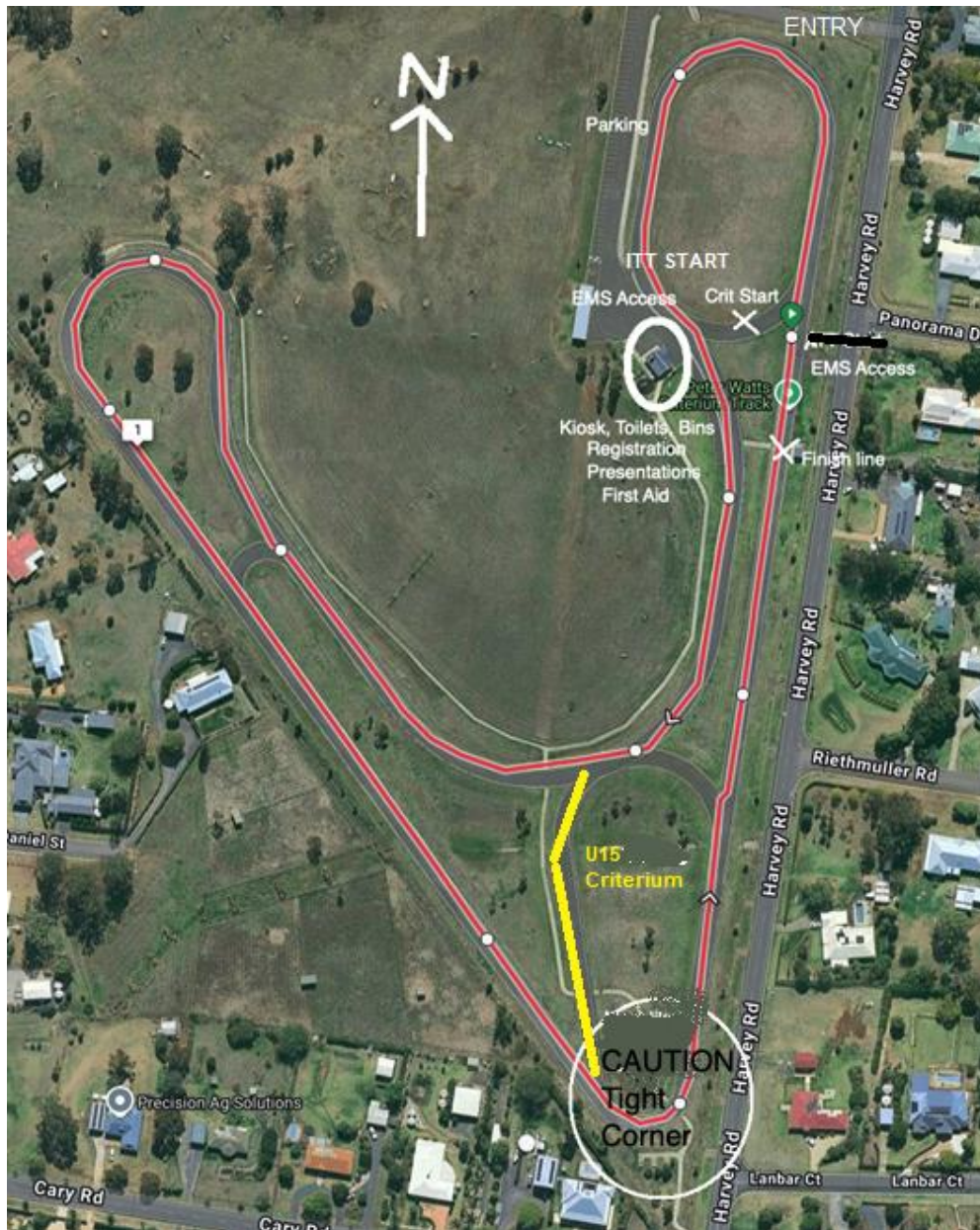
**FIRST AID:** Geoff Bainbridge from First Aid Courses Toowoomba.

<https://firstaidcoursestoowoomba.com.au/>



## VENUE INFORMATION:

Peter Watts Criterium Track, Harvey Rd, Toowoomba. 1.8km loop. Direction of race is anticlockwise.



Division	# laps
U15	6
U17	8
Open	12

NOTE: U15 race the "hotdog" course (yellow line) in the crit. U17 race their AusCycling grade.

# of laps is # of times past finish line.

Parking as shown on the image above and along the northern side of the entry road.

**Race Director:** Mark Wallace  
**Mobile:** 0488 732 115  
**Email:** mwally2871@gmail.com